



# PRICES & OFFERS

WINTER 2022/23



Heaven is under our feet as well as over our heads.

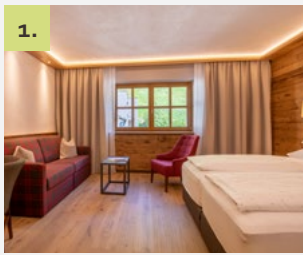
*- Henry David Thoreau -*

"NATURE IS NOT A PLACE TO VISIT. IT IS HOME."

GARY SNYDER



# OUR ROOMS, SUITES, AND FAMILY APARTMENTS

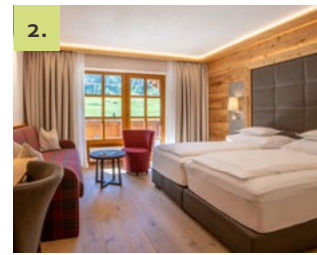


1.



**LUXURY ROOM**  
"WILDES MANNLE" | approx. 31m<sup>2</sup>

Spacious double room in Alpine style with wooden floors, cosy couch, bathroom with shower and WC, Wi-Fi, telephone, radio, satellite TV, room safe.



2.



**LUXURY ROOM**  
"SPIEGELKOGEL" | approx. 31m<sup>2</sup>

Spacious double room in Alpine style with wooden floors, cosy couch, bathroom with shower and WC, Wi-Fi, telephone, radio, satellite TV, room safe, balcony.

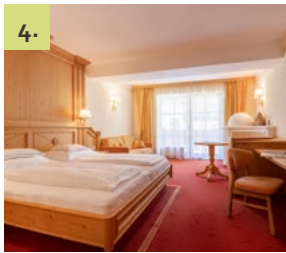


3.



**LUXURY ROOM**  
"DIEMKOGEL" | approx. 31m<sup>2</sup>

Wonderful double room in matured wood with cosy corner seating and tiled stove, desk, bathroom with bath and separate WC, Wi-Fi, telephone, radio, satellite TV, room safe, balcony.

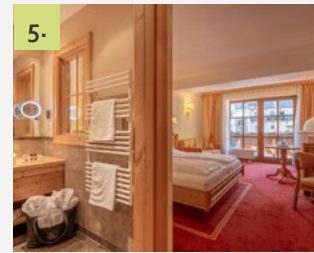


4.



**JUNIOR SUITE "TALLEIT"** | approx. 36m<sup>2</sup>

Wonderful suite in matured wood with cosy living area, pull-out couch, desk, corner seating with tiled stove, bathroom with bath and separate WC, Wi-Fi, telephone, radio, satellite TV, room safe, balcony.

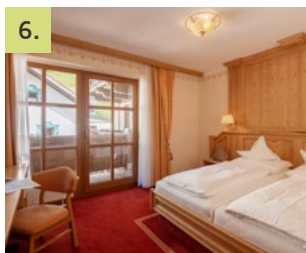


5.



**JUNIOR SUITE PLUS**  
"RAMOLKOGEL" | approx. 51m<sup>2</sup>

Suite in matured wood with separate single room or room with bunk bed, cosy living area with desk, pull-out couch and corner seating with tiled stove, bathroom with bath, double basin and separate WC, Wi-Fi, telephone, radio, satellite TV, room safe, balcony.

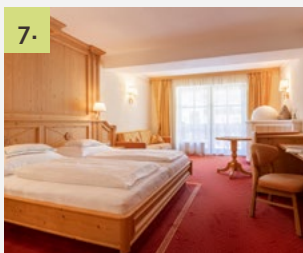


6.



**SUITE "SIMILAUN"** | approx. 60m<sup>2</sup>

Spacious suite with separate bedroom, wardrobe, living room with corner seating and tiled stove, pull-out couch, desk, bathroom with infrared shower, bath, double basin and separate WC, Wi-Fi, telephone, radio, satellite TV, room safe, balcony.

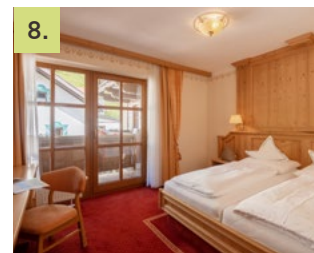


7.



**FAMILY SUITE "TALLEIT"** | approx. 72m<sup>2</sup>  
for 4 to 6 people

Two interconnected junior suites in matured wood, each featuring a cosy living area, corner seating with tiled stove, pull-out couch, two bathrooms with bath and separate WC, Wi-Fi, telephone, radio, satellite TV, room safe, balcony.



8.



**FAMILY SUITE "SIMILAUN"** | approx. 96m<sup>2</sup>  
for 4 to 8 people

"Similaun" suite and "Talleit" junior suite with two bedrooms, one of them with walk-in wardrobe, the other with living area with pull-out couch, seating corner with tiled stove and bathroom with bath and starry sky. Cosy living room with corner seating and tiled stove, pull-out couch, desk. Second bathroom with infrared shower, double basin and separate WC, Wi-Fi, telephone, radio, satellite TV, room safe, balcony.

## WINTER RATES 2022/23\*

OUR ROOMS AND SUITES	BALCONY	SEASON A 24.12.2022 – 07.01.2023		SEASON B 17.12.2022 – 24.12.2022 18.02.2023 – 25.02.2023		SEASON C 28.01.2023 – 18.02.2023 25.02.2023 – 18.03.2023 01.04.2023 – 16.04.2023		SEASON D 07.01.2023 – 28.01.2023 18.03.2023 – 01.04.2023	
		1-3 nights	from 4 nights	1-3 nights	from 4 nights	1-3 nights	from 4 nights	1-3 nights	from 4 nights
		<b>1. LUXURY ROOM "WILDES MANNLE"</b> approx. 31m <sup>2</sup>	no	161	151	142	132	133	123
<b>2. LUXURY ROOM "SPIEGELKOGEL"</b> approx. 31m <sup>2</sup>	yes	165	155	146	136	137	127	128	118
<b>3. LUXURY ROOM "DIEMKOGEL"</b> approx. 31m <sup>2</sup>	yes	165	155	146	136	137	127	128	118
<b>4. JUNIOR SUITE "TALLEIT"</b> approx. 36m <sup>2</sup>	yes	172	162	153	143	144	134	135	125
<b>5. JUNIOR SUITE PLUS "RAMOLKOGEL"</b> approx. 51m <sup>2</sup>	yes	178	168	159	149	150	140	141	131
<b>6. SUITE "SIMILAUN"</b> approx. 60m <sup>2</sup>	yes	188	178	169	159	160	150	151	141
<b>7. FAMILY SUITE "TALLEIT"</b> approx. 72m <sup>2</sup> for 4 to 6 people	yes	172**	162**	153**	143**	144**	134**	135**	125**
<b>8. FAMILY SUITE "SIMILAUN"</b> approx. 96 m <sup>2</sup> for 4 to 6 people	yes	180**	170**	161**	151**	152**	142**	143**	133**

\*All prices are in euros and per person.

\*\*With a minimum occupancy of four people



# GENERAL INFORMATION

- + The prices are per person and night for a minimum stay of four nights (extra charge for short stays: 10 euros per person/night).
- + The prices include breakfast and exclude the local tax of 3.50 euros per person/night (guests born from 2007 onwards are exempted).
- + The 10% discount for Similaun Alpine Club members does not apply in season A and B.
- + Dogs are allowed upon request (and at an extra charge of 20 euros per day excluding food). Please consider that dogs are not allowed in the restaurant.
- + You are welcome to settle your bill by debit or credit card (Visa and MasterCard).



## CANCELLATION POLICY

Special times require special measures, which is why you can now cancel your stay up to 7 days before arrival.  
From 7 days before arrival, we charge 90% of the booked stay.



## CHILDREN'S DISCOUNTS

Children's discounts apply to children staying in their parents' room (with two full-paying adults).

Age 0-3:	-100%
Age 4-5:	-75%
Age 6-10:	-50%
Age 11-15:	-30%
From age 16:	-20%

Children under 16 in separate luxury room: **-20%**

## SINGLE OCCUPANCY

The following single occupancy surcharges apply per night:

Luxury room	+20 euros
Junior suite	+30 euros
Suite "Similaun"	+50 euros



LOOK FORWARD TO  
UNFORGETTABLE  
SKIING ADVENTURES  
STARTING DIRECTLY ON  
YOUR DOORSTEP!