



PRICES & OFFERS

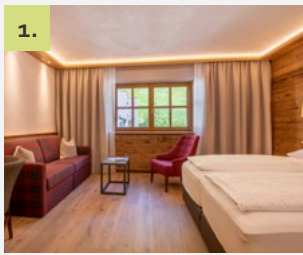
WINTER 2022/23



Heaven is under our feet as well as over our heads.

- Henry David Thoreau -

OUR ROOMS, SUITES, AND FAMILY APARTMENTS

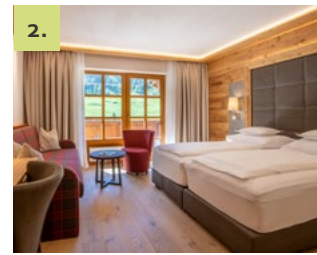


1.



LUXURY ROOM
"WILDES MANNLE" | approx. 31m²

Spacious double room in Alpine style with wooden floors, cosy couch, bathroom with shower and WC, Wi-Fi, telephone, radio, satellite TV, room safe.

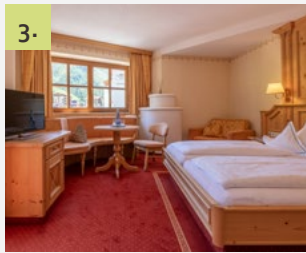


2.



LUXURY ROOM
"SPIEGELKOGEL" | approx. 31m²

Spacious double room in Alpine style with wooden floors, cosy couch, bathroom with shower and WC, Wi-Fi, telephone, radio, satellite TV, room safe, balcony.

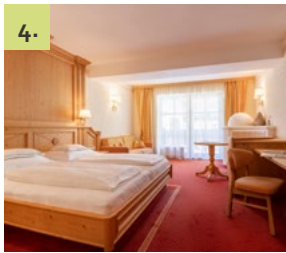


3.



LUXURY ROOM
"DIEMKOGEL" | approx. 31m²

Wonderful double room in matured wood with cosy corner seating and tiled stove, desk, bathroom with bath and separate WC, Wi-Fi, telephone, radio, satellite TV, room safe, balcony.

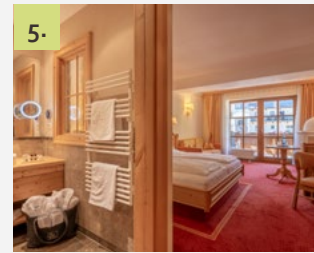


4.



JUNIOR SUITE "TALLEIT" | approx. 36m²

Wonderful suite in matured wood with cosy living area, pull-out couch, desk, corner seating with tiled stove, bathroom with bath and separate WC, Wi-Fi, telephone, radio, satellite TV, room safe, balcony.

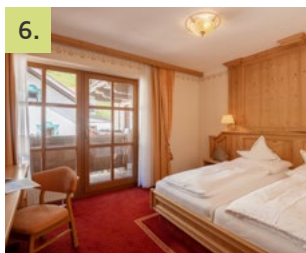


5.



JUNIOR SUITE PLUS
"RAMOLKOGEL" | approx. 51m²

Suite in matured wood with separate single room or room with bunk bed, cosy living area with desk, pull-out couch and corner seating with tiled stove, bathroom with bath, double basin and separate WC, Wi-Fi, telephone, radio, satellite TV, room safe, balcony.

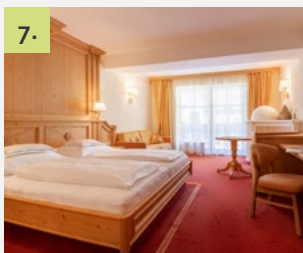


6.

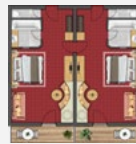


SUITE "SIMILAUN" | approx. 60m²

Spacious suite with separate bedroom, wardrobe, living room with corner seating and tiled stove, pull-out couch, desk, bathroom with infrared shower, bath, double basin and separate WC, Wi-Fi, telephone, radio, satellite TV, room safe, balcony.

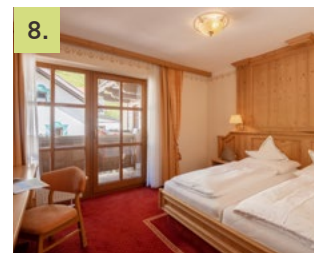


7.



FAMILY SUITE "TALLEIT" | approx. 72m²
for 4 to 6 people

Two interconnected junior suites in matured wood, each featuring a cosy living area, corner seating with tiled stove, pull-out couch, two bathrooms with bath and separate WC, Wi-Fi, telephone, radio, satellite TV, room safe, balcony.



8.



FAMILY SUITE "SIMILAUN" | approx. 96m²
for 4 to 8 people

"Similaun" suite and "Talleit" junior suite with two bedrooms, one of them with walk-in wardrobe, the other with living area with pull-out couch, seating corner with tiled stove and bathroom with bath and starry sky. Cosy living room with corner seating and tiled stove, pull-out couch, desk. Second bathroom with infrared shower, double basin and separate WC, Wi-Fi, telephone, radio, satellite TV, room safe, balcony.

WINTER RATES 2022/23*

OUR ROOMS AND SUITES	BALCONY	SEASON A 24.12.2022 – 07.01.2023		SEASON B 17.12.2022 – 24.12.2022 18.02.2023 – 25.02.2023		SEASON C 28.01.2023 – 18.02.2023 25.02.2023 – 18.03.2023 01.04.2023 – 16.04.2023		SEASON D 07.01.2023 – 28.01.2023 18.03.2023 – 01.04.2023	
		1-3 nights	from 4 nights	1-3 nights	from 4 nights	1-3 nights	from 4 nights	1-3 nights	from 4 nights
		1. LUXURY ROOM "WILDES MANNLE" approx. 31m ²	no	161	151	142	132	133	123
2. LUXURY ROOM "SPIEGELKOGEL" approx. 31m ²	yes	165	155	146	136	137	127	128	118
3. LUXURY ROOM "DIEMKOGEL" approx. 31m ²	yes	165	155	146	136	137	127	128	118
4. JUNIOR SUITE "TALLEIT" approx. 36m ²	yes	172	162	153	143	144	134	135	125
5. JUNIOR SUITE PLUS "RAMOLKOGEL" approx. 51m ²	yes	178	168	159	149	150	140	141	131
6. SUITE "SIMILAUN" approx. 60m ²	yes	188	178	169	159	160	150	151	141
7. FAMILY SUITE "TALLEIT" approx. 72m ² for 4 to 6 people	yes	172**	162**	153**	143**	144**	134**	135**	125**
8. FAMILY SUITE "SIMILAUN" approx. 96 m ² for 4 to 6 people	yes	180**	170**	161**	151**	152**	142**	143**	133**

*All prices are in euros and per person.

**With a minimum occupancy of four people



FROM 1,452 EUROS PER PERSON

FOR 1 WEEK IN THE "WILDES MANNLE" LUXURY ROOM

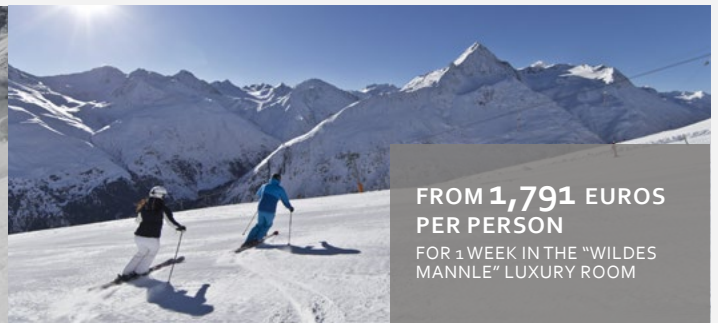
THE ALPINCLUB SIMILAUN WEEK

25.03. – 01.04.2023

- + 7-day stay including breakfast buffet
- + Guided snowshoe hike
- + Guided day ski tour to Schwarzkogel (3,016m) with 1-day ski pass for Sölden ski area
- + Guided 2-day ski tour with overnight stay at Vernagt hut and ascent of Fluchtkogel (3,500m)

from 1,452 euros per person for 1 week in the "Wildes Mannle" luxury room

PLEASE NOTE: Good skiing skills and physical condition are required to participate in the ski tours; special experience in backcountry skiing is not necessary. Experienced local mountain and ski guides accompany all tours. You also have the possibility to hire ski touring gear on-site (please register for gear hire and please note that the gear is not included in the package deal). Short-term changes in the tour programme may occur due to changing weather and snow conditions. The Similaun Alpine Club week takes place with a minimum number of three participants.



FROM 1,791 EUROS PER PERSON

FOR 1 WEEK IN THE "WILDES MANNLE" LUXURY ROOM

FREERIDE SKI WEEK

07.01. – 14.01.2023 | 18.03. – 25.03.2023

- + 7-day stay including breakfast buffet
- + Tyrolean gin and tonic to welcome you
- + 6-day Ötztal Super Skipass
- + 3-day off-piste adventures with a private ski guide

From 1,791 euros per person for 1 week in the "Wildes Mannle" luxury room

PLEASE NOTE: Good skiing skills and physical condition are required. The minimum number of participants is three. Helmets are compulsory. We also recommend that you wear back protectors. Appropriate safety equipment including airbag, avalanche transceiver, shovel, and probe will be provided. If you already have your own equipment, please bring it with you so that you can practice emergency situations with your own equipment.



FROM 1,313 EUROS PER PERSON

FOR 1 WEEK IN THE "WILDES MANNLE" LUXURY ROOM

FINE FOOD AND WINE WEEK

21.01. – 28.01.2023

- + 7-day stay including breakfast buffet
- + 1 glass of Champagne to welcome you and to set the stage for the week ahead
- + 1 tasting menu created by our chef Anna with wine pairing and explanations from our sommelier
- + 1 tasting menu at Ad Vinum restaurant in Sölden with wine pairing and taxi ride
- + 3 guided snowshoe hikes
- + 1 wine tasting with the renowned Monteverro winery from Tuscany

from 1,313 euros per person for 1 week in the "Wildes Mannle" luxury room

GENERAL INFORMATION

- + The prices are per person and night for a minimum stay of four nights (extra charge for short stays: 10 euros per person/night).
- + The prices include breakfast and exclude the local tax of 3.50 euros per person/night (guests born from 2007 onwards are exempted).
- + The 10% discount for Similaun Alpine Club members does not apply in season A and B.
- + Dogs are allowed upon request (and at an extra charge of 20 euros per day excluding food). Please consider that dogs are not allowed in the restaurant.
- + You are welcome to settle your bill by debit or credit card (Visa and MasterCard).
- + The world is currently completely unpredictable. We therefore ask for your understanding that we may have to adjust our prices to the respective situation at short notice.



CANCELLATION POLICY

The general cancellation conditions of the Austrian Hotelier Association apply at our hotel:

- + Cancellations and changes made up to 30 days before the date of arrival are free of charge.
- + For cancellations from 29 to 14 days before the date of arrival, 50% of the total price will be charged.
- + For cancellations from 13 to 7 days before the date of arrival, 50% of the total price will be charged.
- + For cancellations made less than 7 days before arrival or in case of late arrival, no show, or early departure, the full price will be charged.

CHILDREN'S DISCOUNTS

Children's discounts apply to children staying in their parents' room (with two full-paying adults).

Age 0-3:	-100%
Age 4-5:	-75%
Age 6-10:	-50%
Age 11-15:	-30%
From age 16:	-20%

Children under 16 in separate luxury room: **-20%**

SINGLE OCCUPANCY

The following single occupancy surcharges apply per night:

Luxury room	+20 euros
Junior suite	+30 euros
Suite "Similaun"	+50 euros

LOOK FORWARD TO
UNFORGETTABLE
SKIING ADVENTURES
STARTING DIRECTLY ON
YOUR DOORSTEP!



“NATURE IS NOT A PLACE TO VISIT. IT IS HOME.”

GARY SNYDER

