



PRICES & OFFERS

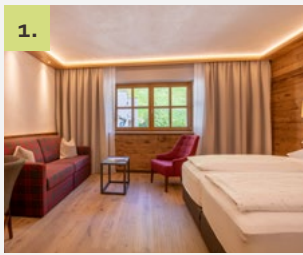
WINTER 2023/24



Heaven is under our feet as well as over our heads.

- Henry David Thoreau -

OUR ROOMS, SUITES, AND FAMILY APARTMENTS

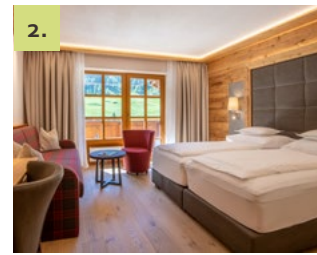


1.



LUXURY ROOM
"WILDES MANNLE" | approx. 31m²

Spacious double room in Alpine style with wooden floors, cosy couch, bathroom with shower and WC, Wi-Fi, telephone, radio, satellite TV, room safe.

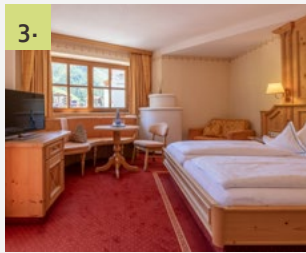


2.



LUXURY ROOM
"SPIEGELKOGEL" | approx. 31m²

Spacious double room in Alpine style with wooden floors, cosy couch, bathroom with shower and WC, Wi-Fi, telephone, radio, satellite TV, room safe, balcony.

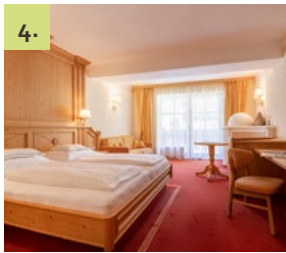


3.



LUXURY ROOM
"DIEMKOGEL" | approx. 31m²

Wonderful double room in matured wood with cosy corner seating and tiled stove, desk, bathroom with bath and separate WC, Wi-Fi, telephone, radio, satellite TV, room safe, balcony.

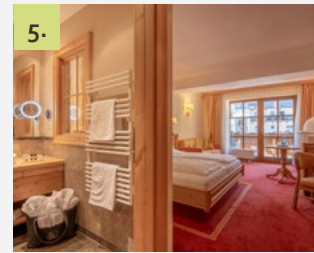


4.



JUNIOR SUITE "TALLEIT" | approx. 36m²

Wonderful suite in matured wood with cosy living area, pull-out couch, desk, corner seating with tiled stove, bathroom with bath and separate WC, Wi-Fi, telephone, radio, satellite TV, room safe, balcony.

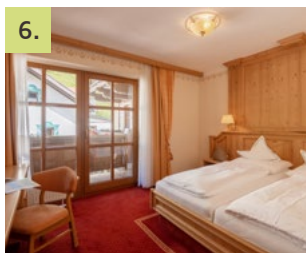


5.



JUNIOR SUITE PLUS
"RAMOLKOGEL" | approx. 51m²

Suite in matured wood with separate single room or room with bunk bed, cosy living area with desk, pull-out couch and corner seating with tiled stove, bathroom with bath, double basin and separate WC, Wi-Fi, telephone, radio, satellite TV, room safe, balcony.

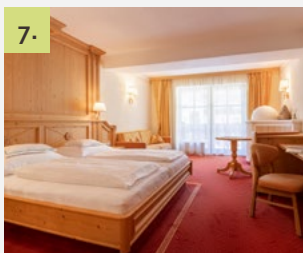


6.

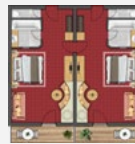


SUITE "SIMILAUN" | approx. 60m²

Spacious suite with separate bedroom, wardrobe, living room with corner seating and tiled stove, pull-out couch, desk, bathroom with infrared shower, bath, double basin and separate WC, Wi-Fi, telephone, radio, satellite TV, room safe, balcony.

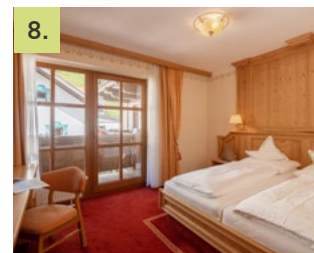


7.



FAMILY SUITE "TALLEIT" | approx. 72m²
for 4 to 6 people

Two interconnected junior suites in matured wood, each featuring a cosy living area, corner seating with tiled stove, pull-out couch, two bathrooms with bath and separate WC, Wi-Fi, telephone, radio, satellite TV, room safe, balcony.



8.



FAMILY SUITE "SIMILAUN" | approx. 96m²
for 4 to 8 people

"Similaun" suite and "Talleit" junior suite with two bedrooms, one of them with walk-in wardrobe, the other with living area with pull-out couch, seating corner with tiled stove and bathroom with bath and starry sky. Cosy living room with corner seating and tiled stove, pull-out couch, desk. Second bathroom with infrared shower, double basin and separate WC, Wi-Fi, telephone, radio, satellite TV, room safe, balcony.

WINTER RATES 2023/24*

OUR ROOMS AND SUITES	BALCONY	SEASON A 22.12.2023 – 06.01.2024		SEASON B 16.12.2023 – 22.12.2023 10.02.2024 – 17.02.2024		SEASON C 27.01.2024 – 10.02.2024 17.02.2024 – 09.03.2024 23.03.2024 – 07.04.2024		SEASON D 06.01.2024 – 27.01.2024 09.03.2024 – 23.03.2024	
		1-3 nights	from 4 nights	1-3 nights	from 4 nights	1-3 nights	from 4 nights	1-3 nights	from 4 nights
		1. LUXURY ROOM "WILDES MANNLE" approx. 31m ²	no	164	154	145	135	136	126
2. LUXURY ROOM "SPIEGELKOGEL" approx. 31m ²	yes	169	159	150	140	141	131	131	121
3. LUXURY ROOM "DIEMKOGEL" approx. 31m ²	yes	169	159	150	140	141	131	131	121
4. JUNIOR SUITE "TALLEIT" approx. 36m ²	yes	176	166	157	147	148	138	138	128
5. JUNIOR SUITE PLUS "RAMOLKOGEL" approx. 51m ²	yes	182	172	163	153	154	144	144	134
6. SUITE "SIMILAUN" approx. 60m ²	yes	192	182	173	163	164	154	154	144
7. FAMILY SUITE "TALLEIT" approx. 72m ² for 4 to 6 people	yes	176**	166**	157**	147**	148**	138**	138**	128**
8. FAMILY SUITE "SIMILAUN" approx. 96 m ² for 4 to 6 people	yes	184**	174**	165**	155**	156**	146**	146**	136**

*All prices are in euros and per person.

**With a minimum occupancy of four people

GENERAL INFORMATION

- + The prices are per person and night for a minimum stay of four nights (extra charge for short stays: 10 euros per person/night).
- + The prices include breakfast and exclude the local tax of 4.00 euros per person/night (guests born from 2008 onwards are exempted).
- + The 10% discount for Similaun Alpine Club members does not apply in season A and B.
- + Dogs are allowed upon request (and at an extra charge of 20 euros per day excluding food). Please consider that dogs are not allowed in the restaurant.
- + You are welcome to settle your bill by debit or credit card (Visa and MasterCard).
- + The world is currently completely unpredictable. We therefore ask for your understanding that we may have to adjust our prices to the respective situation at short notice.



CANCELLATION POLICY

The general cancellation conditions of the Austrian Hotelier Association apply at our hotel:

- + Cancellations and changes made up to 30 days before the date of arrival are free of charge.
- + For cancellations from 29 to 14 days before the date of arrival, 50% of the total price will be charged.
- + For cancellations from 13 to 7 days before the date of arrival, 50% of the total price will be charged.
- + For cancellations made less than 7 days before arrival or in case of late arrival, no show, or early departure, the full price will be charged.

CHILDREN'S DISCOUNTS

Children's discounts apply to children staying in their parents' room (with two full-paying adults).

Age 0-3:	-100%
Age 4-5:	-75%
Age 6-10:	-50%
Age 11-15:	-30%
From age 16:	-20%

Children under 16 in separate luxury room: **-20%**

SINGLE OCCUPANCY

The following single occupancy surcharges apply per night:

Luxury room	+20 euros
Junior suite	+30 euros
Suite "Similaun"	+50 euros



LOOK FORWARD TO
UNFORGETTABLE
SKIING ADVENTURES
STARTING DIRECTLY ON
YOUR DOORSTEP!

"NATURE IS NOT A PLACE TO VISIT. IT IS HOME."

GARY SNYDER

