

WINTER RATES 2020/21*

OUR ROOMS AND SUITES	BALCONY	SEASON A 19.12.2020 – 02.01.2021		SEASON B 02.01.2021 – 09.01.2021 13.02.2021 – 20.02.2021		SEASON C 30.01.2021 – 13.02.2021 20.02.2021 – 13.03.2021 27.03.2021 – 11.04.2021		SEASON D 09.01.2021 – 30.01.2021 13.03.2021 – 27.03.2021	
		1-3 nights	from 4 nights	1-3 nights	from 4 nights	1-3 nights	from 4 nights	1-3 nights	from 4 nights
1. LUXURY ROOM "WILDES MANNLE" approx. 31 m ²	no	159	149	141	131	132	122	124	114
2. LUXURY ROOM "SPIEGELKOGEL" approx. 31 m ²	yes	161	151	143	133	134	124	126	116
3. LUXURY ROOM "DIEMKOGEL" approx. 31 m ²	yes	161	151	143	133	134	124	126	116
4. JUNIOR SUITE "TALLEIT" approx. 36 m ²	yes	168	158	150	140	141	131	133	123
5. JUNIOR SUITE PLUS "RAMOLKOGEL" approx. 51 m ²	yes	174	164	156	146	147	137	139	129
6. SUITE "SIMILAUN" approx. 60 m ²	yes	183	173	165	155	156	146	148	138
7. FAMILY SUITE "TALLEIT" approx. 72 m ² for 4 to 6 people	yes	168**	158**	150**	140**	141**	131**	133**	123**
8. FAMILY SUITE "SIMILAUN" approx. 96 m ² for 4 to 6 people	yes	176**	166**	158**	148**	149**	139**	141**	131**

*All prices are in euros and per person.

**With a minimum occupancy of four people

"NATURE IS NOT A PLACE TO VISIT. IT IS HOME."

GARY SNYDER



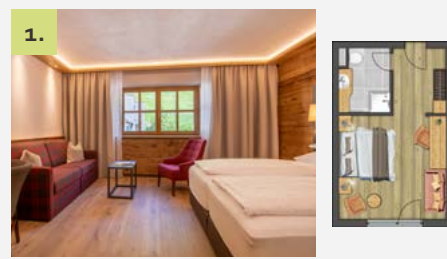
Pirpamer-Moser family | Venterstraße 47 | 6458 Vent | Ötztal-Tyrol | Austria
T. +43 (0)5254 8119 | F. +43 (0)5254 8119 4 | natur@alpinhotel-post.com | www.alpinhotel-post.com

PRICES &
PACKAGES

WINTER 2020/21



OUR ROOMS, SUITES, AND FAMILY APARTMENTS



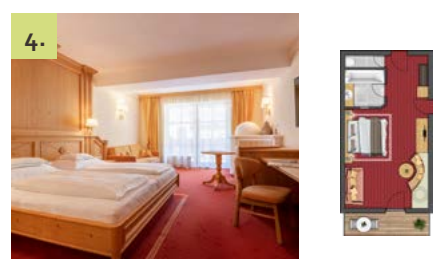
1.
LUXURY ROOM
"WILDES MANNLE" | approx. 31 m²

Spacious double room in Alpine style with wooden floors, cosy couch, bathroom with shower and WC, Wi-Fi, telephone, radio, LCD-TV, room safe.



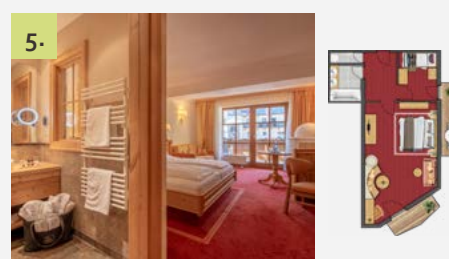
2.
LUXURY ROOM
"SPIEGELKOGEL" | approx. 31 m²

Spacious double room in Alpine style with wooden floors, cosy couch, bathroom with shower and WC, Wi-Fi, telephone, radio, LCD-TV, room safe, balcony.



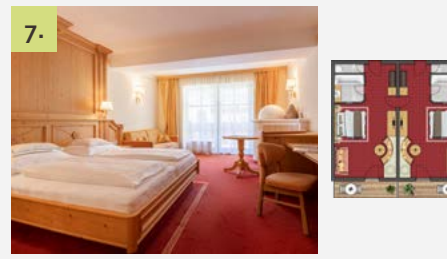
3.
LUXURY ROOM
"DIEMKOGEL" | approx. 31 m²

Wonderful suite in matured wood with cosy corner seating and tiled stove, desk, bathroom with bath and separate WC, Wi-Fi, telephone, radio, LCD-TV, room safe, balcony.



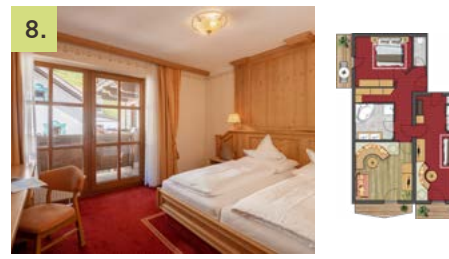
4.
JUNIOR SUITE "TALLEIT" | approx. 36 m²

Wonderful suite in matured wood with cosy living area, pull-out couch, desk, corner seating with tiled stove, bathroom with bath and separate WC, Wi-Fi, telephone, radio, LCD-TV, room safe, balcony.



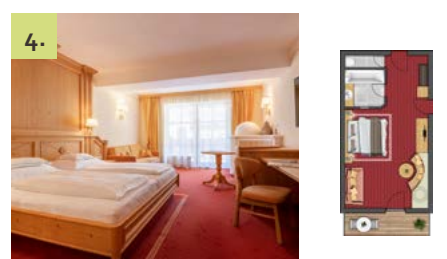
6.
SUITE "SIMILAUN" | approx. 60 m²

Spacious suite with separate bedroom, wardrobe, living room with corner seating and tiled stove, pull-out couch, desk, bathroom with infrared shower, bath, double basin and separate WC, Wi-Fi, telephone, radio, LCD-TV, room safe, balcony.



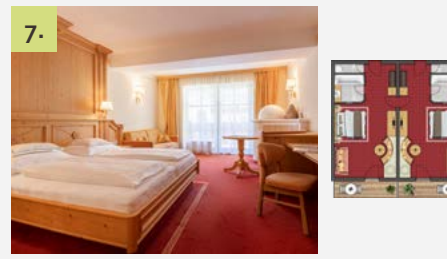
7.
FAMILY SUITE "TALLEIT" | approx. 72 m²
for 4 to 6 people

Two interconnected junior suites in matured wood, each featuring a cosy living area, corner seating with tiled stove, pull-out couch, two bathrooms with bath and separate WC, Wi-Fi, telephone, radio, LCD-TV, room safe, balcony.



5.
JUNIOR SUITE PLUS
"RAMOLKOGEL" | approx. 51 m²

Suite in matured wood with separate single room or room with bunk bed, cosy living area with desk, pull-out couch and corner seating with tiled stove, bathroom with bath, double basin and separate WC, Wi-Fi, telephone, radio, LCD-TV, room safe, balcony.



8.
FAMILY SUITE "SIMILAUN" | approx. 96 m²
for 4 to 8 people

"Similaun" suite and "Talleit" junior suite with two bedrooms, one of them with walk-in wardrobe, the other with living area with pull-out couch, seating corner with tiled stove and bathroom with bath and starry sky. Cosy living room with corner seating and tiled stove, pull-out couch, desk. Second bathroom with infrared shower, double basin and separate WC, Wi-Fi, telephone, radio, LCD-TV, room safe, balcony.

PACKAGES 2021



FROM **1,376** EUROS
PER PERSON
FOR 1 WEEK IN THE "WILDES
MANNLE" LUXURY ROOM

THE SIMILAUN ALPINE CLUB WEEK

20.03. – 27.03.2021

- + 7-day winter experience including 6-day gourmet board
- + Guided snowshoe hike
- + Guided day ski tour to the Hinterer Spiegelkogel mountain (3,424 m)
- + Two-day guided ski tour with overnight stay at the Similaun hut and ascent to the Similaun mountain (3,606 m)
- + A bottle of Similaun wine as a farewell present

from **1,376** euros per person for 1 week in
the "Wildes Mannle" luxury room

PLEASE NOTE: Good skiing skills and physical condition are required to participate in the ski tours, special experience in backcountry skiing is not necessary. Experienced local mountain- and ski guides accompany all tours. You also have the possibility to hire ski touring gear on-site (please register for gear hire and please note that the gear is not included in the package deal). Short-term changes in the tour programme may apply due to changing weather and snow conditions. The Similaun Alpine Club week takes place with a minimum number of three participants.



FROM **1,128** EUROS
PER PERSON
FOR 1 WEEK IN THE "WILDES
MANNLE" LUXURY ROOM

FINE FOOD AND WINE WEEK

23.01. – 30.01.2021

- + 7 days including gourmet board



IN MARCH
FROM **1,688** EUROS
PER PERSON
FOR 1 WEEK IN THE "WILDES
MANNLE" LUXURY ROOM

FREERIDE SKI WEEK

16.01. – 23.01.2021 | 13.03. – 20.03.2021

- + 7 days including Hotel Post gourmet board
- + Tyrolean Gin Tonic to welcome you
- + 6-day Ötztal Super Skipass
- + 3-day off-slope adventures with a private ski guide

From **1,688** euros per person for 1 week in the
"Wildes Mannle" luxury room

PLEASE NOTE: Good skiing skills and physical condition are required. The minimum number of participants is three. Helmets are compulsory. We also recommend that you wear back protectors. Appropriate safety equipment including airbag, avalanche transceiver, shovel, and probe will be provided. If you already have your own equipment, please bring it with you so that you can practice emergency situations with your own equipment.

- + 1 glass of Champagne to welcome you and to set the stage for the week ahead
- + Tasting menu with matching wines introduced by our sommelier
- + Summit dinner in the ice Q gourmet restaurant on the Gaislachkogel mountain, including beverages, lift, and taxi
- + Snowshoe hike
- + Torch-lit hike followed by port wine tasting on the subject of "Blaufränkisch"

from **1,128** euros per person for 1 week in
the "Wildes Mannle" luxury room

GENERAL INFORMATION

- + The prices are per person and night for a minimum stay of four nights (extra charge for short stays: 10 euro per person and night).
- + Prices are including half board and excluding the tourist tax amounting to 3.50 euros per person and night (for guests above the age of 14).
- + The prices in season A include the gala dinners and celebrations on Christmas Eve and New Year's Eve.
- + Package deals must be paid in cash.
- + The 10% discount for Similaun Alpine Club members does not apply in season A and B.
- + Dogs are allowed upon request (and at an extra charge of 15.00 euros per day excluding food). Please consider that dogs are not allowed in the restaurant.
- + You are welcome to settle your bill by debit- or credit card (Visa and MasterCard).

CANCELLATION POLICY

Special times require special measures, which is why you can now cancel your stay up to 7 days before arrival.

From 7 days before arrival, we charge 90% of the booked stay.



LOOK FORWARD TO
UNFORGETTABLE
SKIING ADVENTURES
STARTING DIRECTLY ON
YOUR DOORSTEP!



CHILDREN REDUCTIONS

Children reductions apply to children staying in their parents' room (or with two full-paying adults).

Age 0-3:	-100%
Age 4-5:	-75%
Age 6-10:	-50%
Age 11-15:	-30%
From age 16:	-20%

Children under 16 in separate comfort room: **-20%**

SINGLE OCCUPANCY

The following single occupancy surcharges apply per night:

Comfort room	+20 euros
Junior suite	+30 euros
Suite "Similaun"	+50 euros