

SUMMER RATES 2021*

OUR ROOMS AND SUITES	BALCONY	SEASON A 12.06. – 26.06.2021		SEASON B 26.06. – 11.09.2021		SEASON C 11.09. – 26.09.2021	
		1-3 nights	from 4 nights	1-3 nights	from 4 nights	1-3 nights	from 4 nights
1. COMFORT ROOM "WILDES MANNLE" approx. 31 m ²	no	117	107	124	114	117	107
2. COMFORT ROOM "SPIEGELKOGEL" approx. 31 m ²	yes	119	109	126	116	119	109
3. COMFORT ROOM "DIEMKOGEL" approx. 31 m ²	yes	119	109	126	116	119	109
4. JUNIOR SUITE "TALLEIT" approx. 36 m ²	yes	126	116	133	123	126	116
5. JUNIOR SUITE PLUS "RAMOLKOGEL" approx. 51 m ²	yes	133	123	140	130	133	123
6. SUITE "SIMILAUN" approx. 60 m ²	yes	140	130	147	137	140	130
7. FAMILY SUITE "TALLEIT" approx. 72 m ² for 4 to 6 people	yes	126**	116**	133**	123**	126**	116**
8. FAMILY SUITE "SIMILAUN" approx. 96 m ² for 4 to 8 people	yes	133**	123**	140**	130**	133**	123**

*Prices per person per night

**with a minimum occupancy of four people

"WALKING IS THE PERFECT WAY OF MOVING IF YOU WANT TO SEE INTO THE LIFE OF THINGS. IT IS THE ONE WAY OF FREEDOM."

ELIZABETH VON ARNIM



Pirpamer-Moser family | 6458 Vent | Ötztal | Tyrol | Austria
T. +43 (0)5254 8119 | F. +43 (0)5254 8119 4 | natur@alpinhotel-post.com | www.alpinhotel-post.com

RATES &
PACKAGES

SUMMER 2021



OUR ROOMS, SUITES, AND FAMILY ROOMS



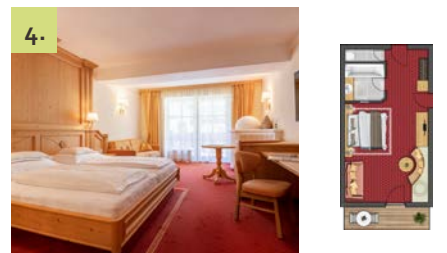
1.
COMFORT ROOM
"WILDES MANNLE" | approx. 31 m²

Spacious double room in Alpine style with wooden floors, cosy couch, bathroom with shower and WC, Wi-Fi, telephone, radio, satellite TV, room safe.



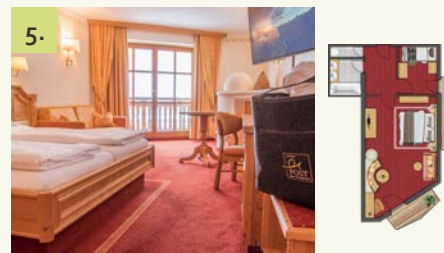
2.
COMFORT ROOM
"SPIEGELKOGEL" | approx. 31 m²

Spacious double room in Alpine style with wooden floors, cosy couch, bathroom with shower and WC, Wi-Fi, telephone, radio, satellite TV, room safe, balcony.



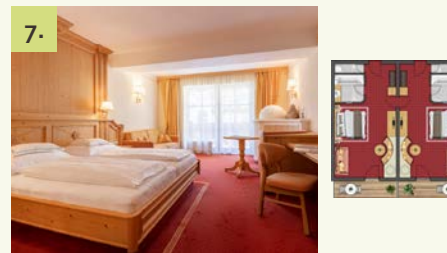
3.
COMFORT ROOM
"DIEMKOGEL" | approx. 31 m²

Wonderful suite in matured wood with cosy corner seating and tiled stove, desk, bathroom with bath and separate WC, Wi-Fi, telephone, radio, satellite TV, room safe, balcony.



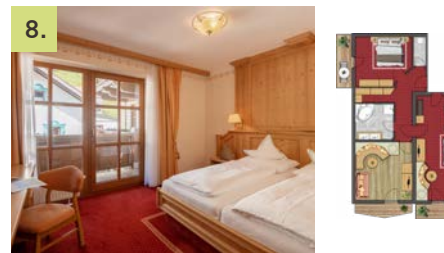
4.
JUNIOR SUITE "TALLEIT" | approx. 36 m²

Wonderful suite in matured wood with cosy living area, pull-out couch, desk, corner seating with tiled stove, bathroom with bath and separate WC, Wi-Fi, telephone, radio, LCD-TV, room safe, balcony.



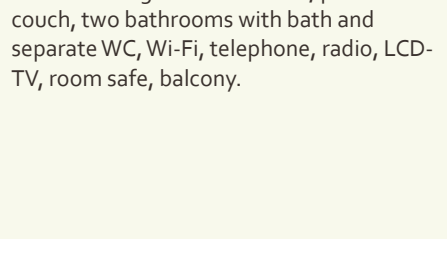
6.
SUITE "SIMILAUN" | approx. 60 m²

Spacious suite with extra bedroom, wardrobe, living room with corner seating and tiled stove, pull-out couch, desk, bathroom with infrared shower, bath, double basin, and separate WC, Wi-Fi, telephone, radio, LCD-TV, room safe, balcony.



7.
FAMILY SUITE "TALLEIT" | approx. 72 m²
for 4 to 6 people

Two interconnected junior suites in matured wood, each featuring a cosy living area, corner seating with tiled stove, pull-out couch, two bathrooms with bath and separate WC, Wi-Fi, telephone, radio, LCD-TV, room safe, balcony.



8.
FAMILY SUITE "SIMILAUN" | approx. 96 m²
for 4 to 8 people

"Similaun" suite and "Talleit" junior suite with two bedrooms, one of them with walk-in wardrobe, the other with living area with pull-out couch, seating corner with tiled stove and bathroom with bath and starry sky. Cosy living room with corner seating and tiled stove, pull-out couch, desk. Second bathroom with infrared shower, double basin, and separate WC, Wi-Fi, telephone, radio, LCD-TV, room safe, balcony.

OFFERS 2021



FROM 1,209 EUROS PER PERSON
FOR 1 WEEK IN THE "WILDES MANNLE" COMFORT ROOM

THE SIMILAUN ALPINE CLUB CLIMBING WEEK

19.06. – 26.06.2021

Treat yourself to a time-out full of adrenaline and action: our experienced guide accompanies you to exciting climbing or canyoning adventures, to the climbing park, or to the high rope course.

- + Seven days of mountain adventures including gourmet board
- + On Sunday, a welcome evening with presentation of the programme and tours
- + Three days of rocky adventures: via ferrata, climbing park, high rope course, and canyoning
- + Varied hiking programme on the remaining days
- + Your personal climbing helmet upon arrival
- + A relaxed evening together to round off an eventful week, in a mountain hut or in our lounge
- + Free Ötztal Premium Card

Hinweis: An expert mountain guide will accompany you on the more demanding mountain and summit tours. Please note that summit tours, like all hikes in high alpine terrain, are weather-dependent. Short-term changes to the tour programme may apply due to changing weather and snow situations. Good physical condition and sure-footedness are required. Suitable mountaineering boots and alpine equipment (weather protection, sunscreen) are also required. Further equipment is available free of charge. The Similaun Alpine Club climbing week and the Similaun Alpine Club high mountain week package are charged in full to cover organisation costs. No refunds will be given for one or more missed tours. The Similaun Alpine Club climbing week and the Similaun Alpine Club high mountain week take place with a minimum of three participants.



FROM 1,494 EUROS PER PERSON
FOR 1 WEEK IN THE "WILDES MANNLE" COMFORT ROOM

THE SIMILAUN ALPINE CLUB HIGH MOUNTAIN WEEK

11.09. – 18.09.2021

Are you a fan of alpinism and want to reach new heights? Then this offer is just perfect for you. Together, we will go on exciting hikes and ascend spectacular peaks. Higher, faster, further!

- + Seven days of mountain adventures including 6-day gourmet board and 1 overnight stay at the Similaun hut
- + On Sunday, a welcome evening with presentation of the programme and tours
- + A guided mountain tour to the Rofenkar glacier
- + A guided 2-day tour to the Hintere Schwärze (3,628m.) including an overnight stay at the Similaun hut
- + Varied hiking programme on the remaining days
- + A relaxed evening together to round off an eventful week, in a mountain hut or in our lounge
- + Free Ötztal Premium Card



FROM 1,028 EUROS PER PERSON
FOR 1 WEEK IN THE "WILDES MANNLE" COMFORT ROOM

WINE & FINE FOOD WEEK

26.06. – 03.07.2021

- + Seven days including gourmet board
- + A glass of Champagne to welcome you
- + On Sunday, tasting menu with matching wines introduced by our sommelier
- + Another tasting menu with matching wines
- + Visit to the Bäckelar Brewery, the only brewery in Sölden
- + Short hike in the environs, followed by a wine tasting
- + A varied hiking programme
- + Free Ötztal Premium Card

Connoisseurs, this one is for you! During this week, we will spoil your palate with delicious menus and matching wines recommended by our sommelier. The programme also includes leisurely hikes followed by delightful tasting sessions.

GENERAL INFORMATION



- + Prices include half board, excl. tourist tax amounting to 3.50 euro per person and night (guests born after 2005 are exempted).
- + The guided hikes (daily, excluding Saturdays) are including in the rate.
- + Upon arrival, we will give you the Ötztal Premium Card free of charge, which grants you a wide range of benefits.
- + Dogs are allowed on request (15.00 euro per day, food excluded). Please note that dogs are not allowed in the restaurant.
- + You are welcome to settle your bill by debit card or credit card (Visa and Mastercard).
- + Package deals must be paid in cash.

CANCELLATION POLICY

- + Cancellations made less than 7 days before the date of arrival, late arrival, non-arrival, or early departure will be charged in full.
- + Cancellations made 7 to 13 days before the date of arrival will be charged 70% of the total price.
- + Cancellations made 14 to 29 days before the date of arrival will be charged 50% of the total price.
- + Cancellations and changes made up to 30 days before the date of arrival are free of charge.

CHILDREN'S RATES

Children's rates apply to children staying in their parents' room (or with two full-paying adults).

Age 0-3:	-100%
Age 4-5:	-75%
Age 6-10:	-50%
Age 11-15:	-30%
Over 15:	-20%

Children under 16 in a separate comfort or luxury room: -20%

SINGLE OCCUPANCY

The following single occupancy surcharges apply per person and night:

Comfort room	+20.00 euros
Junior suite	+30.00 euros
Suite "Similaun"	+50.00 euros

The guided hikes (daily, excluding Saturdays) are including in the rate.

ÖTZTAL PREMIUM CARD

One card, countless advantages! With the Ötztal Premium Card, which you will receive upon arrival, you are spoilt for choice. Enjoy free travel on the mountain lifts and public buses, free entry to swimming pools, adventure pools, and lakes, reduced admission

to museums and other leisure facilities, and attractive discounts throughout the valley. The list of inclusive services is long, discover them all!