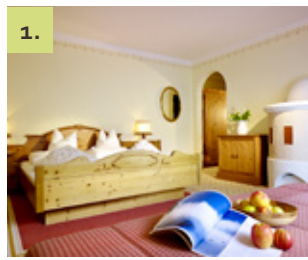


**RATES &  
PACKAGES**

SUMMER 2020

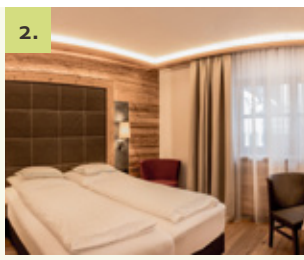


# OUR ROOMS, AND SUITES, AND FAMILY ROOMS



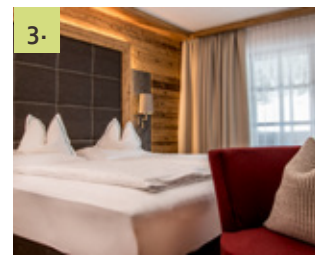
**1. COMFORT ROOM** | approx. 31 m<sup>2</sup>

Spacious double room, cosy corner seating with pull-out couch, tiled stove, bathroom with bath and WC, Wi-Fi, telephone, radio, satellite TV, room safe, optionally with balcony or without balcony.



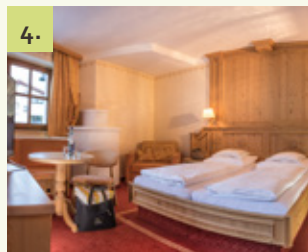
**2. COMFORT ROOM "WILDES MANNLE"** | approx. 31 m<sup>2</sup>

Spacious double room in Alpine style with wooden floors, cosy couch, bathroom with shower and WC, Wi-Fi, telephone, radio, satellite TV, room safe.



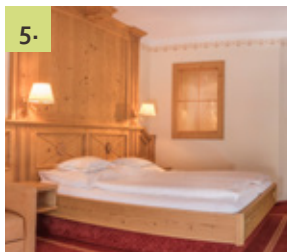
**3. COMFORT ROOM "SPIEGELKOGEL"** | approx. 31 m<sup>2</sup>

Spacious double room in Alpine style with wooden floors, cosy couch, bathroom with shower and WC, Wi-Fi, telephone, radio, satellite TV, room safe, balcony.



**4. COMFORT ROOM "DIEMKOGEL"** | approx. 31 m<sup>2</sup>

Wonderful suite in matured wood with cosy corner seating and tiled stove, desk, bathroom with bath and separate WC, Wi-Fi, telephone, radio, satellite TV, room safe, balcony.



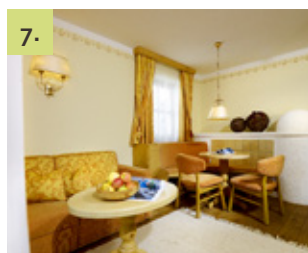
**5. JUNIOR SUITE "TALLEIT"** | approx. 36 m<sup>2</sup>

Wonderful suite in matured wood with cosy living area, pull-out couch, desk, corner seating with tiled stove, bathroom with bath and separate WC, Wi-Fi, telephone, radio, LCD-TV, room safe, balcony.



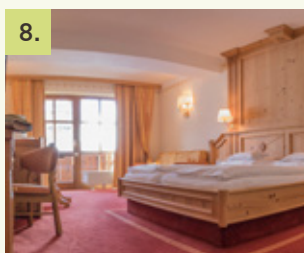
**6. JUNIOR SUITE PLUS "RAMOLKOGEL"** | approx. 51 m<sup>2</sup>

Suite in matured wood with separate single room or room with bunk bed, cosy living area with desk, pull-out couch, and corner seating with tiled stove, bathroom with bath, double basin, and separate WC, Wi-Fi, telephone, radio, LCD-TV, room safe, balcony.



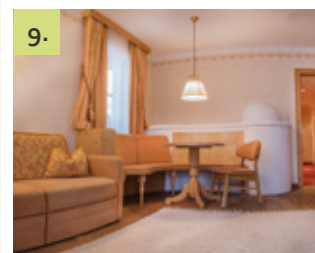
**7. SUITE "SIMILAUN"** | approx. 60 m<sup>2</sup>

Spacious suite with extra bedroom, wardrobe, living room with corner seating and tiled stove, pull-out couch, desk, bathroom with infrared shower, bath, double basin, and separate WC, Wi-Fi, telephone, radio, LCD-TV, room safe, balcony.



**8. FAMILY SUITE "TALLEIT"** | approx. 72 m<sup>2</sup> for 4 to 6 people

Two interconnected junior suites in matured wood, each featuring a cosy living area, corner seating with tiled stove, pull-out couch, two bathrooms with bath and separate WC, Wi-Fi, telephone, radio, LCD-TV, room safe, balcony.



**9. FAMILY SUITE "SIMILAUN"** | approx. 96 m<sup>2</sup> for 4 to 8 people

"Similaun" suite and "Talleit" junior suite with two bedrooms, one of them with walk-in wardrobe, the other with living area with pull-out couch, seating corner with tiled stove and bathroom with bath and starry sky. Cosy living room with corner seating and tiled stove, pull-out couch, desk. Second bathroom with infrared shower, double basin, and separate WC, Wi-Fi, telephone, radio, LCD-TV, room safe, balcony.

## SUMMER RATES 2020\*

OUR ROOMS AND SUITES	BALCONY	SEASON A 06.06. – 27.06.2020		SEASON B 27.06. – 12.09.2020		SEASON C 12.09. – 27.09.2020	
		1-3 nights	from 4 nights	1-3 nights	from 4 nights	1-3 nights	from 4 nights
1. COMFORT ROOM approx. 31 m <sup>2</sup>	no	102	92	108	98	102	92
	yes	104	94	110	100	104	94
2. COMFORT ROOM "WILDES MANNLE" approx. 31 m <sup>2</sup>	no	115	105	121	111	115	105
3. COMFORT ROOM "SPIEGELKOGEL" approx. 31 m <sup>2</sup>	yes	117	107	123	113	117	107
4. COMFORT ROOM "DIEMKOGEL" approx. 31 m <sup>2</sup>	yes	117	107	123	113	117	107
5. JUNIOR SUITE "TALLEIT" approx. 36 m <sup>2</sup>	yes	124	114	130	120	124	114
6. JUNIOR SUITE PLUS "RAMOLKOGEL" approx. 51 m <sup>2</sup>	yes	131	121	137	127	131	121
7. SUITE "SIMILAUN" approx. 60 m <sup>2</sup>	yes	138	128	144	134	138	128
8. FAMILY SUITE "TALLEIT" approx. 72 m <sup>2</sup> for 4 to 6 people	yes	124**	114**	130**	120**	124**	114**
9. FAMILY SUITE "SIMILAUN" approx. 96 m <sup>2</sup> for 4 to 8 people	yes	131**	121**	137**	127**	131**	121**

\*Prices per person per night

\*\*with a minimum occupancy of four people

## THE ALPINCLUB SIMILAUN WEEK

20.06. – 27.06.2020 | 12.09. – 19.09.2020

Every day, a new mountain experience – if you are a passionate mountaineer, this package is for you! We will be climbing high mountains and enjoying pleasurable hikes.

- + 7-day winter experience including 6-day gourmet board and an overnight stay at the Vernagt hut (2,362 metres)
- + On Sunday, welcome evening with presentation of the programme and tours
- + Guided day tour to the Gampleskogel (3.402 metres)
- + Guided 2-day tour to the Hochvernagtspitze (3.535 metres) with overnight stay at the Vernagt hut
- + Various hiking programmes for the remaining of the days
- + A relaxed night together to round off an eventful week, in a mountain hut or in our lounge
- + Free Ötztal Premium Card

**from 1,403 euros per person for 1 week in a comfort room**

**PLEASE NOTE:** An expert Alpine guide will accompany you on the more demanding mountain and summit tours.

Please consider that summit tours, like all hikes in high-Alpine terrain, are weather-dependent. Short-term changes of the tour programme are possible due to the weather conditions and the snow situation. Good physical condition and sure-footedness are requisite. Suitable mountaineering boots and equipment are also recommended (weather protection, sunscreen). Any other necessary equipment is available free of charge. Please be informed that the Alpinclub Similaun package is charged in full to cover organisation costs. No refunds will be given for one or more missed tours. The Alpinclub Similaun week takes place with a minimum of three participants.

**FROM 1,403 EUROS PER PERSON**

FOR 1 WEEK IN A COMFORT ROOM



**FROM 887 EUROS PER PERSON**

FOR 1 WEEK IN A COMFORT ROOM

## FINE FOOD AND WINE WEEK

27.06. – 04.07.2020

Connoisseurs, this one is for you! During this week, we will spoil your palate with delicious menus and matching wines recommended by our sommelier. The programme also includes leisurely hikes followed by delightful tasting sessions.

- + 7 days including gourmet board
- + 1 glass of Champagne to welcome you and to set the stage for the week ahead
- + On Sunday, tasting menu with matching wines introduced by our sommelier
- + Herbal hike
- + One evening degustation menu with wine accompaniment
- + Short hike in the environs, followed by a wine tasting
- + A varied hiking programme
- + Free Ötztal Premium Card

**from 887 euros per person for 1 week in a comfort room**



# GENERAL INFORMATION



- + Prices include half board, excl. tourist tax amounting to 2.50 euro per person and night (guests born after 2004 are exempted).
- + The guided hikes (daily, excluding Saturdays) are including in the rate.
- + Upon arrival, we will give you the Ötztal Premium Card free of charge, which grants you a wide range of benefits.
- + Dogs are allowed on request (15.00 euro per day, food excluded). Please note that dogs are not allowed in the restaurant.
- + You are welcome to settle your bill by debit card or credit card (Visa and Mastercard).
- + Package deals must be paid in cash.

## CANCELLATION POLICY

- + Cancellations made less than 7 days before the date of arrival, late arrival, non-arrival, or early departure will be charged in full.
- + Cancellations made 7 to 13 days before the date of arrival will be charged 70% of the total price.
- + Cancellations made 14 to 29 days before the date of arrival will be charged 50% of the total price.
- + Cancellations and changes made up to 30 days before the date of arrival are free of charge.

## CHILDREN'S RATE

Children's rates apply to children staying in their parents' room (or with two full-paying adults).

Age 0-3:	-100%
Age 4-5:	-75%
Age 6-10:	-50%
Age 11-15:	-30%
Over 15:	-20%

Children under 16 in a separate comfort or luxury room: -20%

## SINGLE OCCUPANCY

The following single occupancy surcharges apply per person and night:

Comfort room	+20.00 euros
Junior suite	+30.00 euros
Suite "Similaun"	+50.00 euros

The guided hikes  
(daily, excluding  
Saturdays)  
are including  
in the rate.

## ÖTZTAL PREMIUM CARD

One card, countless advantages! With the Ötztal Premium Card, which you will receive upon arrival, you are spoilt for choice. Enjoy free travel on the mountain lifts and public buses, free entry to swimming pools, adventure pools, and lakes, reduced admission

to museums and other leisure facilities, and attractive discounts throughout the valley. The list of inclusive services is long, discover them all!

“WALKING IS THE PERFECT WAY OF MOVING IF YOU WANT TO SEE INTO THE LIFE OF THINGS. IT IS THE ONE WAY OF FREEDOM.”

ELIZABETH VON ARNIM

