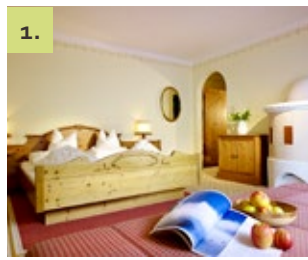


**PRICES &  
PACKAGES**

WINTER 2019/20

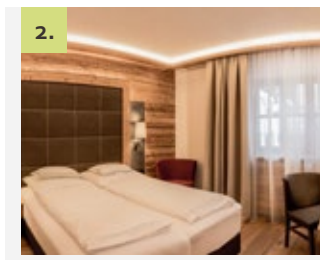


# OUR ROOMS AND SUITES



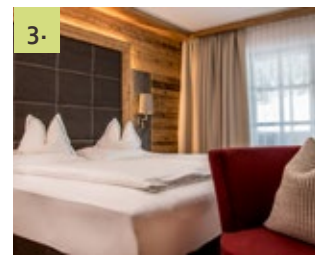
## COMFORT ROOM | approx. 31 m<sup>2</sup>

Spacious double room, cosy corner seating with pull-out couch, tiled stove, bathroom with bath and WC, Wi-Fi, telephone, radio, satellite TV, room safe, optionally with balcony or without balcony.



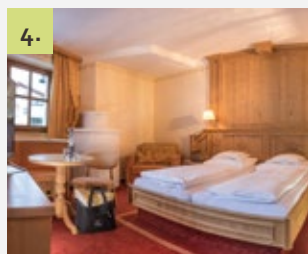
## LUXURY ROOM „WILDES MANNLE“ | approx. 31 m<sup>2</sup>

Spacious double room in Alpine style with wooden floors, cosy couch, bathroom with shower and WC, Wi-Fi, telephone, radio, satellite TV, room safe.



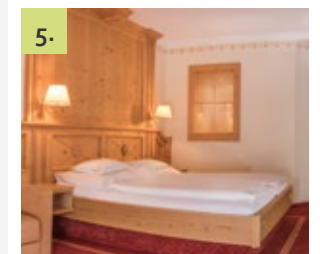
## LUXURY ROOM „SPIEGELKOGEL“ | approx. 31 m<sup>2</sup>

Spacious double room in Alpine style with wooden floors, cosy couch, bathroom with shower and WC, Wi-Fi, telephone, radio, satellite TV, room safe, balcony.



## LUXURY ROOM „DIEMKOGEL“ | approx. 31 m<sup>2</sup>

Wonderful suite in matured wood with cosy corner seating and tiled stove, desk, bathroom with bath and separate WC, Wi-Fi, telephone, radio, satellite TV, room safe, balcony.



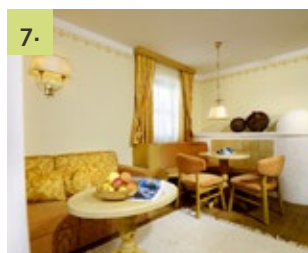
## JUNIOR SUITE „TALLEIT“ | approx. 36 m<sup>2</sup>

Wonderful suite in matured wood with cosy living area, pull-out couch, desk, corner seating with tiled stove, bathroom with bath and separate WC, Wi-Fi, telephone, radio, LCD-TV, room safe, balcony.



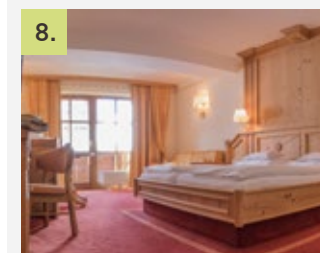
## JUNIOR SUITE PLUS „RAMOLKOGEL“ | approx. 51 m<sup>2</sup>

Suite in matured wood with separate single room or room with bunk bed, cosy living area with desk, pull-out couch and corner seating with tiled stove, bathroom with bath, double basin and separate WC, Wi-Fi, telephone, radio, LCD-TV, room safe, balcony.



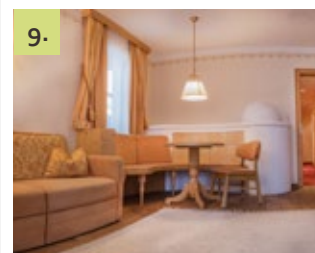
## SUITE „SIMILAUN“ | approx. 60 m<sup>2</sup>

Spacious suite with extra bedroom, wardrobe, living room with corner seating and tiled stove, pull-out couch, desk, bathroom with infrared shower, bath, double basin and separate WC, Wi-Fi, telephone, radio, LCD-TV, room safe, balcony.



## FAMILY SUITE „TALLEIT“ | approx. 72 m<sup>2</sup> for 4 to 6 people

Two interconnected junior suites in matured wood, each featuring a cosy living area, corner seating with tiled stove, pull-out couch, two bathrooms with bath and separate WC, Wi-Fi, telephone, radio, LCD-TV, room safe, balcony.



## FAMILY SUITE „SIMILAUN“ | approx. 96 m<sup>2</sup> for 4 to 8 people

"Similaun" suite and "Talleit" junior suite with two bedrooms, one of them with walk-in wardrobe, the other with living area with pull-out couch, seating corner with tiled stove and bathroom with bath and starry sky. Cosy living room with corner seating and tiled stove, pull-out couch, desk. Second bathroom with infrared shower, double basin and separate WC, Wi-Fi, telephone, radio, LCD-TV, room safe, balcony.

## WINTER RATES 2019/20\*

OUR ROOMS AND SUITES	BALKONY	SEASON A 20.12.19 – 04.01.20		SEASON B 04.01.20 – 11.01.20 22.02.20 – 29.02.20		SEASON C 01.02.20 – 22.02.20 29.02.20 – 14.03.20 28.03.20 – 19.04.20		SEASON D 11.01.20 – 01.02.20 14.03.20 – 28.03.20	
		1-3 nights	from 4 nights	1-3 nights	from 4 nights	1-3 nights	from 4 nights	1-3 nights	from 4 nights
1. COMFORT ROOM approx. 31 m <sup>2</sup>	no	139	129	121	111	112	102	104	94
	yes	141	131	123	113	114	104	106	96
2. LUXURY ROOM „WILDES MANNLE“ approx. 31 m <sup>2</sup>	no	154	144	136	126	127	117	119	109
3. LUXURY ROOM „SPIEGELKOGEL“ approx. 31 m <sup>2</sup>	yes	156	146	138	128	129	119	121	111
4. LUXURY ROOM „DIEMKOGEL“ approx. 31 m <sup>2</sup>	yes	156	146	138	128	129	119	121	111
5. JUNIOR SUITE „TALLEIT“ approx. 36 m <sup>2</sup>	yes	163	153	145	135	136	126	128	118
6. JUNIOR SUITE PLUS „RAMOLKOGEL“ approx. 51 m <sup>2</sup>	yes	169	159	151	141	142	132	134	124
7. SUITE „SIMILAUN“ approx. 60 m <sup>2</sup>	yes	178	168	160	150	151	141	143	133
8. FAMILY SUITE „TALLEIT“ approx. 72 m <sup>2</sup> for 4 to 6 people	yes	163**	153**	145**	135**	136**	126**	128**	118**
9. FAMILY SUITE „SIMILAUN“ approx. 96 m <sup>2</sup> for 4 to 6 people	yes	171**	161**	153**	143**	144**	134**	136**	126**

\*All prices are in euros and per person.

\*\*with a minimum occupancy of four people

## PACKAGES 2020



**FROM 1.250 EUROS  
PER PERSON**  
FOR 1 WEEK IN A COMFORT  
ROOM

### THE SIMILAUN ALPINE CLUB WEEK

**21.03. – 28.03.2020**

- + 7-day winter experience including 6-day gourmet board
- + Guided snowshoe hike
- + Guided day ski tour to the Hinterer Spiegelkogel mountain (3,424 m)
- + Two-day guided ski tour with overnight stay at the Similaun hut and ascent to the Similaun mountain (3,606 m)
- + A bottle of Similaun wine as a farewell present

---

from 1,250 euros per person for 1 week in a comfort room

**PLEASE NOTE:** Good skiing skills and physical condition are required to participate in the ski tours; special experience in backcountry skiing is not necessary. Experienced local mountain- and ski guides accompany all tours. You also have the possibility to hire ski touring gear on-site (please register for gear hire and please note that the gear is not included in the package deal). Short-term changes in the tour programme may apply due to changing weather and snow conditions. The Similaun Alpine Club week takes place with a minimum number of three participants.



**FROM 947 EUROS  
PER PERSON**  
FOR 1 WEEK IN A COMFORT  
ROOM

### FINE FOOD AND WINE WEEK

**25.01. – 01.02.2020**

- + 7 days including gourmet board
- + 1 glass of champagne to welcome you and to set the stage for



**IN JANUARY  
FROM 1.548 EUROS  
PER PERSON**  
FOR 1 WEEK IN A COMFORT  
ROOM

**IN MARCH  
FROM 1.578 EUROS  
PER PERSON**  
FOR 1 WEEK IN A COMFORT  
ROOM

### FREERIDE SKI WEEK

**18.01. – 25.01.2020 | 14.03. – 21.03.2020**

- + 7 days including gourmet board
- + Tyrolean Gin Tonic to welcome you
- + 6-day Ötztal Super Skipass
- + 3-day off-slope adventures with a private ski guide

---

**In January from 1,548 euros per person for 1 week in a comfort room**

---

**In March from 1,578 euros per person for 1 week in a comfort room**

**PLEASE NOTE:** Good skiing skills and physical condition are required. The minimum number of participants is three. Helmets are compulsory. We also recommend that you wear back protectors. Appropriate safety equipment including airbag, avalanche transceiver, shovel, and probe will be provided. If you already have your own equipment, please bring it with you so that you can practice emergency situations with your own equipment.

- the week ahead
- + On Sunday, tasting menu with matching wines introduced by our sommelier
- + Fondue evening at the Hohe Mut hut, including lift and taxi
- + Snowshoe hike followed by port wine tasting

---

from 947 euros per person for 1 week in a comfort room

# GENERAL INFORMATION



- + Prices include half board, excl. tourist tax amounting to 3.00 euro per person and night (guests born after 2004 are exempted).
- + Dogs are allowed on request (15.00 euro per day, food excluded). Please note that dogs are not allowed in the restaurant.
- + You are welcome to settle your bill by debit card or credit card (Visa and Mastercard).
- + Package deals must be paid in cash.

## CANCELLATION POLICY

- + Cancellations made less than 7 days before the date of arrival, late arrival, non-arrival, or early departure will be charged in full.
- + Cancellations made 7 to 13 days before the date of arrival will be charged 70% of the total price.
- + Cancellations made 14 to 29 days before the date of arrival will be charged 50% of the total price.
- + Cancellations and changes made up to 30 days before the date of arrival are free of charge.

## CHILDREN REDUCTIONS

Children reductions apply to children staying in their parents' room (or with two full-paying adults).

Age 0-3:	-100 %
Age 4-5:	-75 %
Age 6-10:	-50 %
Age 11-15:	-30%
Over 15:	-20 %

Children under 16 in separate luxury room: **-20%**

## SINGLE OCCUPANCY

The following single occupancy surcharges apply per person and night:

Comfort room and luxury room	+20 euros
Junior suite	+30 euros
Suite „Similaun“	+50 euros

LOOK FORWARD TO  
UNFORGETTABLE  
SKIING ADVENTURES  
START DIRECTLY ON  
YOUR DOORSTEP!





“NATURE IS NOT A PLACE TO VISIT. IT IS HOME.”

GARY SNYDER



Pirpamer-Moser family | Venterstraße 47 | A-6458 Vent | Ötztal-Tyrol  
T. +43 (0)5254 8119 | F. +43 (0)5254 8119 4 | natur@alpinhotel-post.com | www.alpinhotel-post.com

brandmatic.com | Photos: Mario Rabensteiner, Daniel Schwarz, Picasa, PTFair, pro, Archive Hotel Post | Prints: saphir.oz.it